

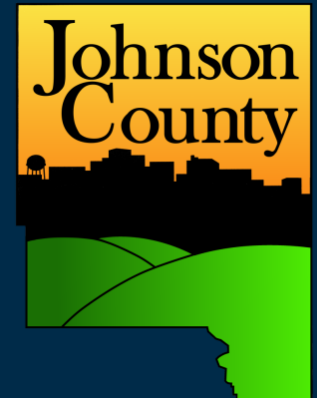


Greater Iowa City Home Builders Association Meeting

Josh Busard

Johnson County - Planning, Development & Sustainability

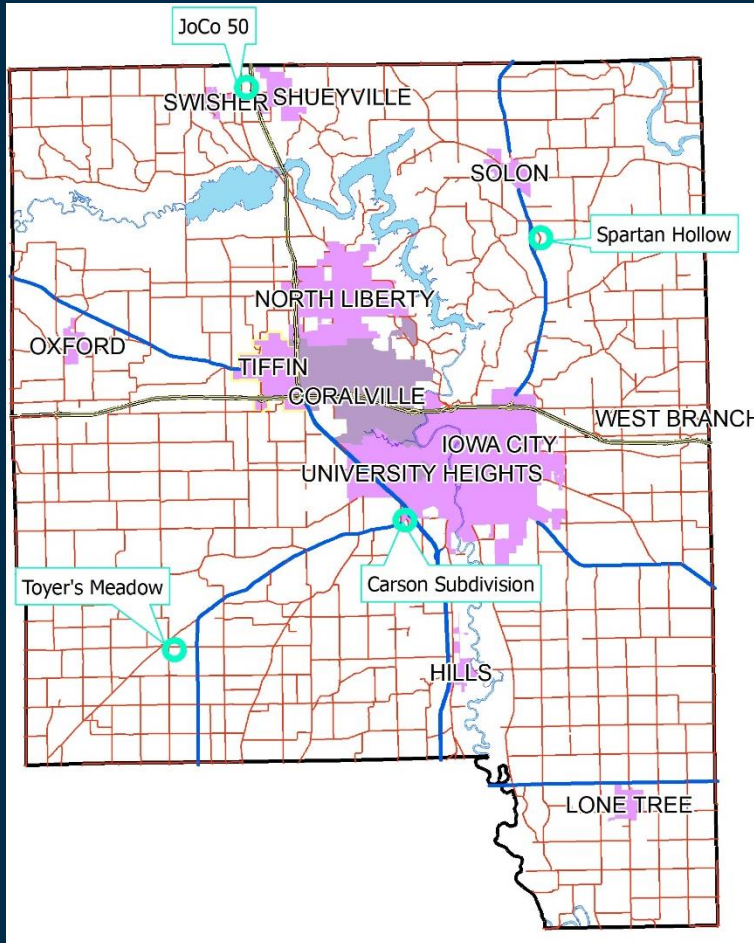
April 15, 2021





New Developments Since March 2020

89 total residential lots subdivided in unincorporated Johnson County. Another 130+ in progress, including:

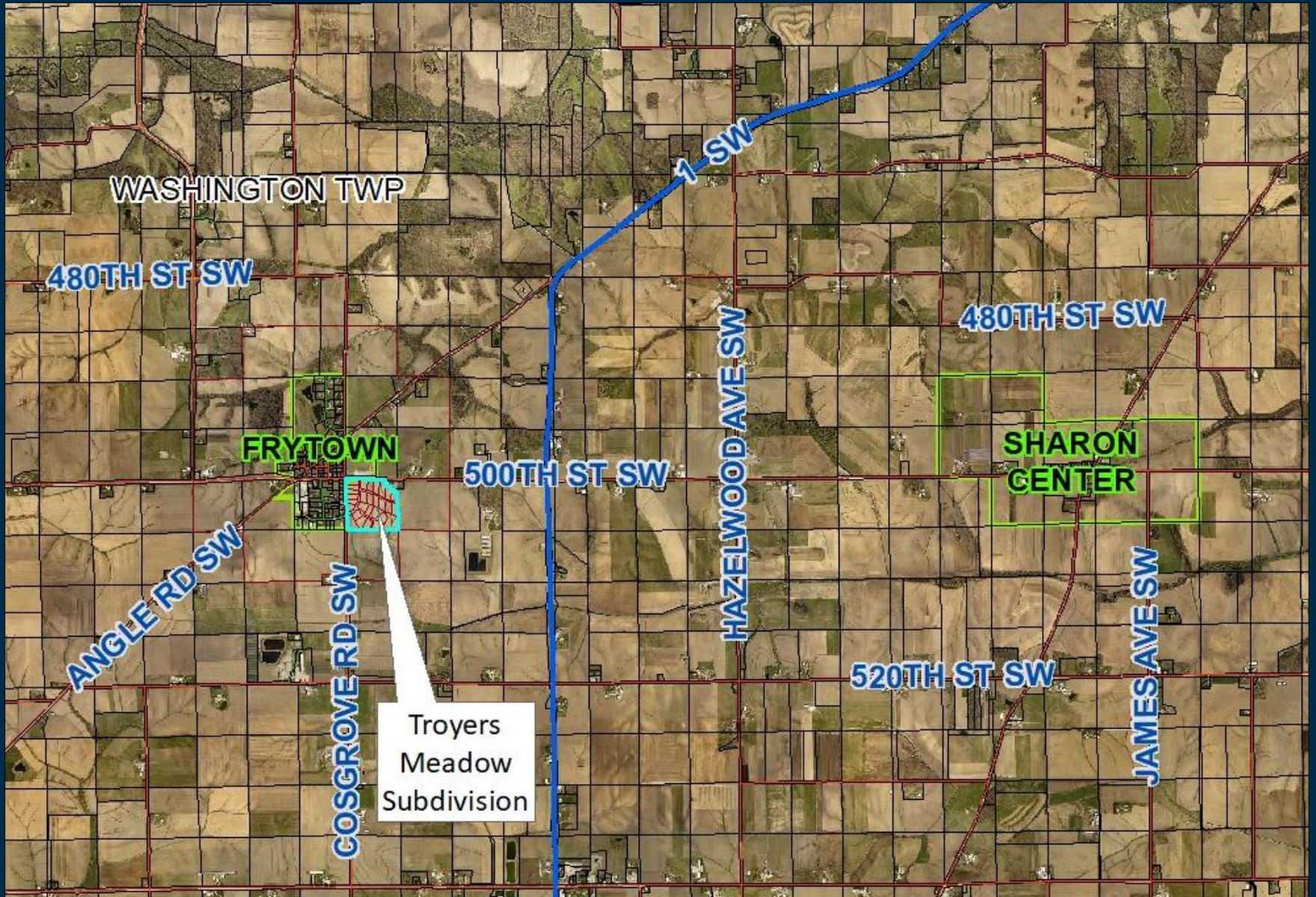


- Troyer's Meadow (31 lots)
- Spartan Hollow (52 lots)
- Carson Subdivision (38 lots)
- JoCo 50 (9 commercial lots)
- 218 Commercial Subdivision (65+ acres)

23 rezonings on approximately 360 acres.



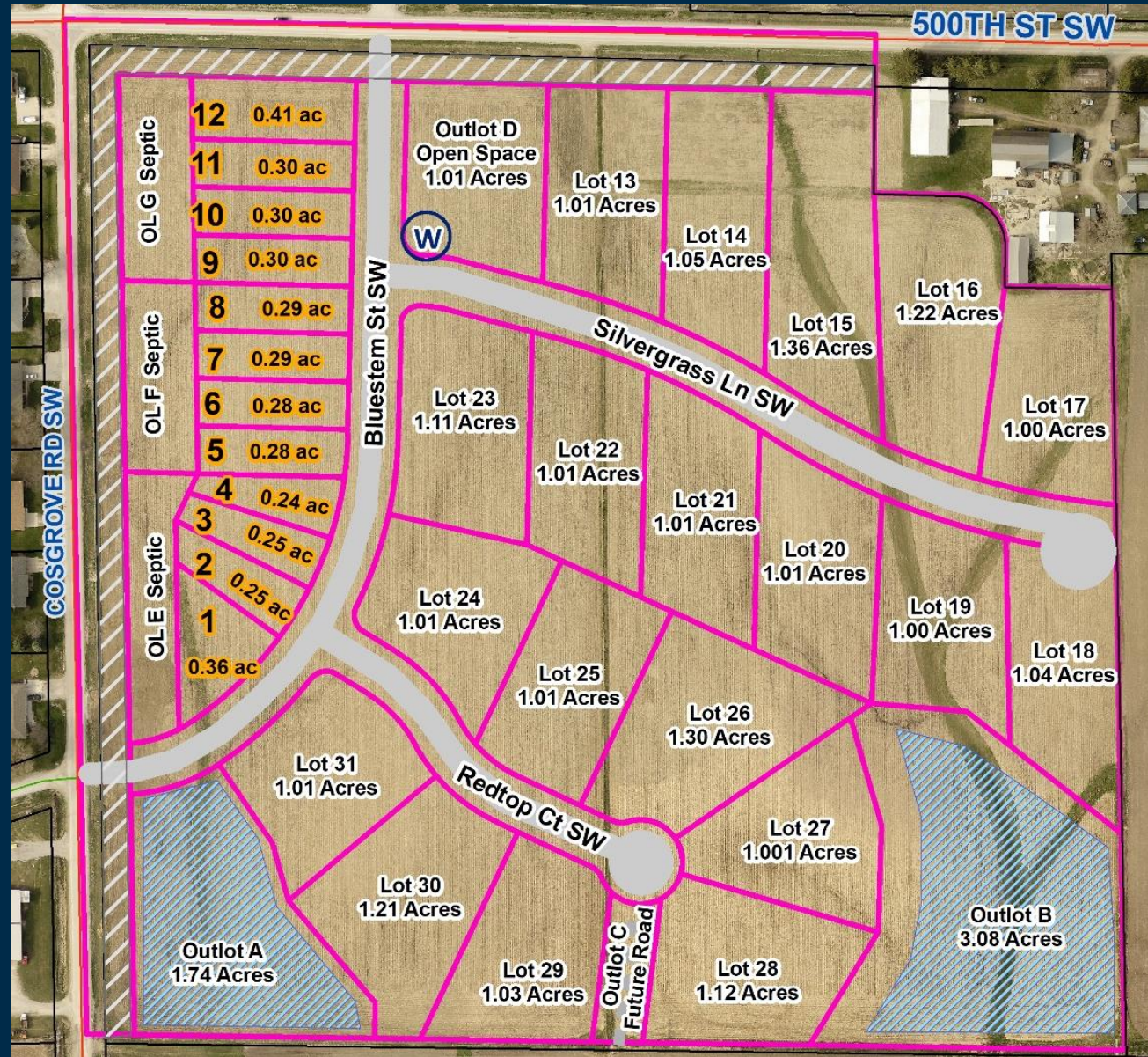
Troyer's Meadow



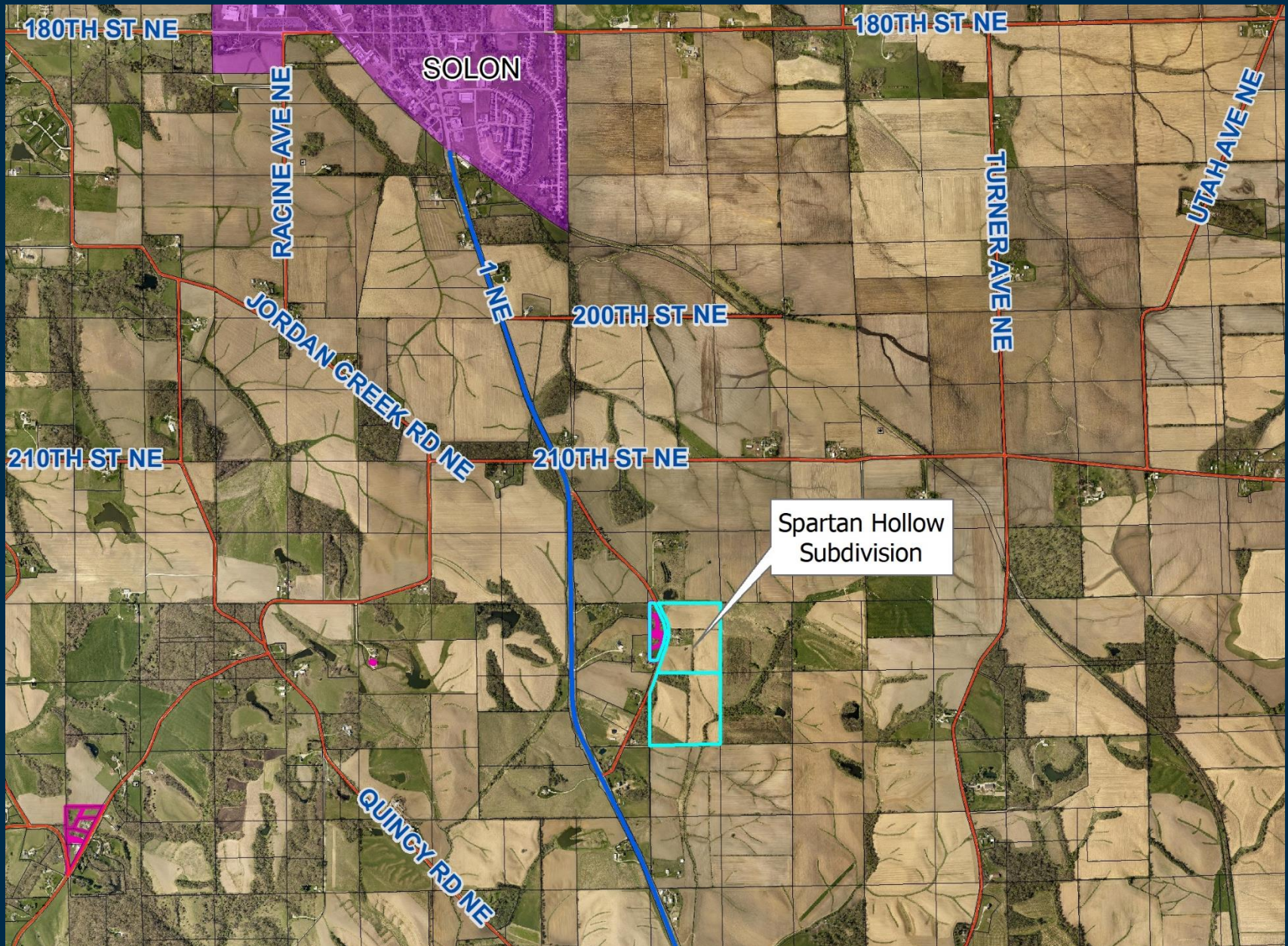


Troyer's Meadow

- 31 buildable lots on a total of 35.86 acres
- Pending Board approval of final plat
- Lots range in size from 0.24 acres to 1.36 acres
- Average lot size: 0.81 acres



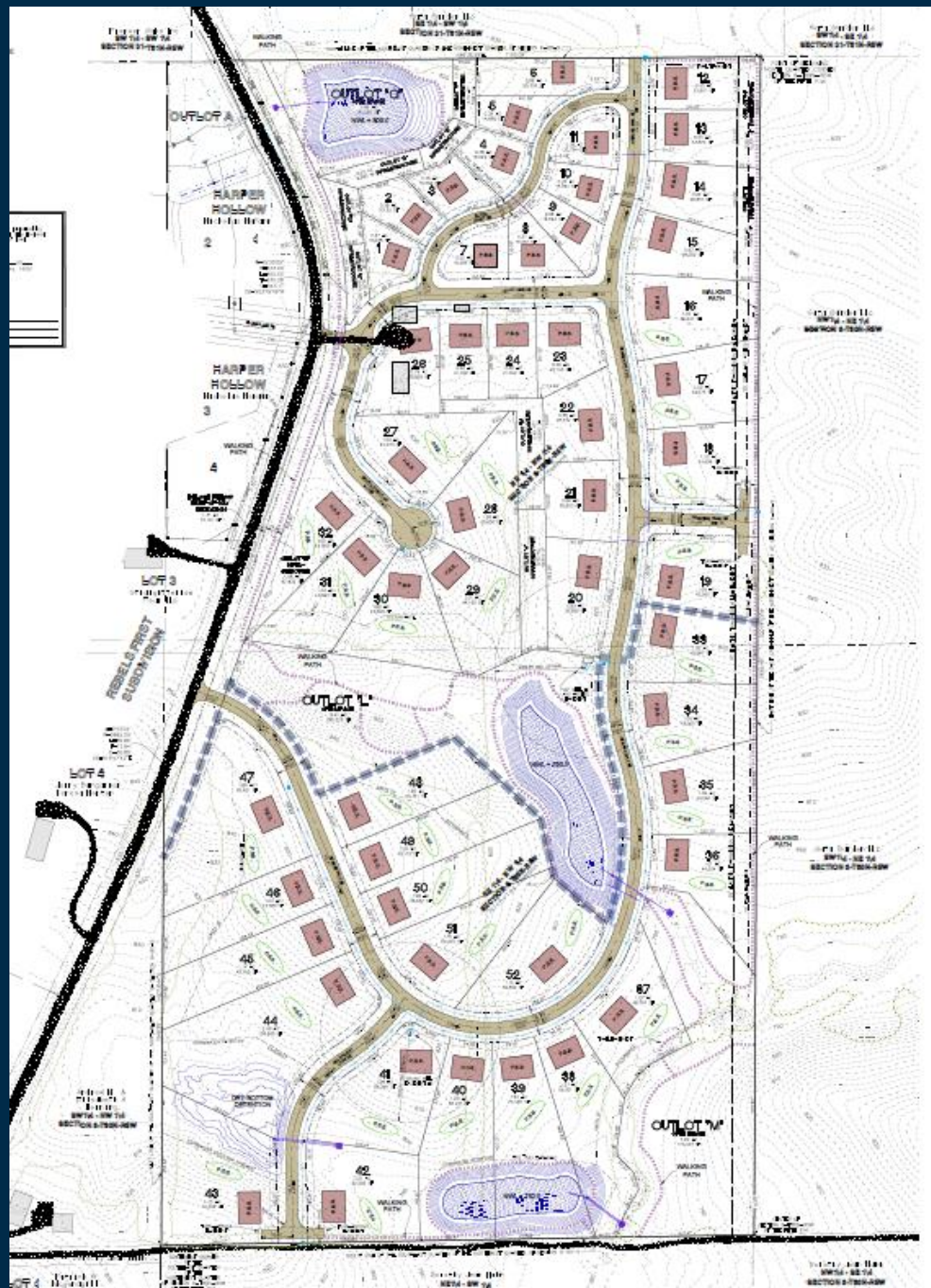
Spartan Hollow



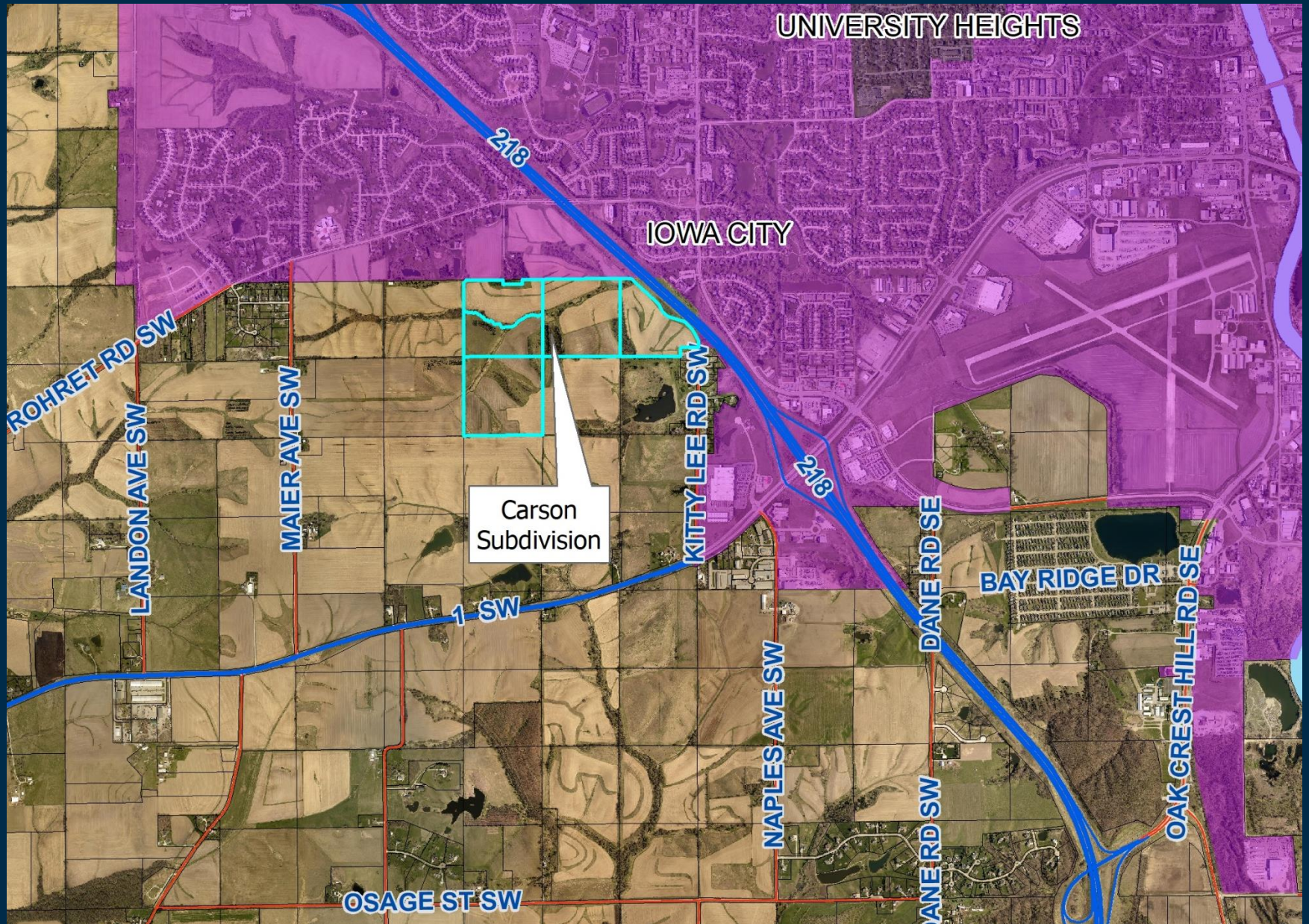


Spartan Hollow

- 51 buildable lots on a total of 72.16 acres
- Pending Board approval of prelim plat
- Lots range in size from 0.34 acre to 2.04 acres
- Average lot size: 0.95 acres



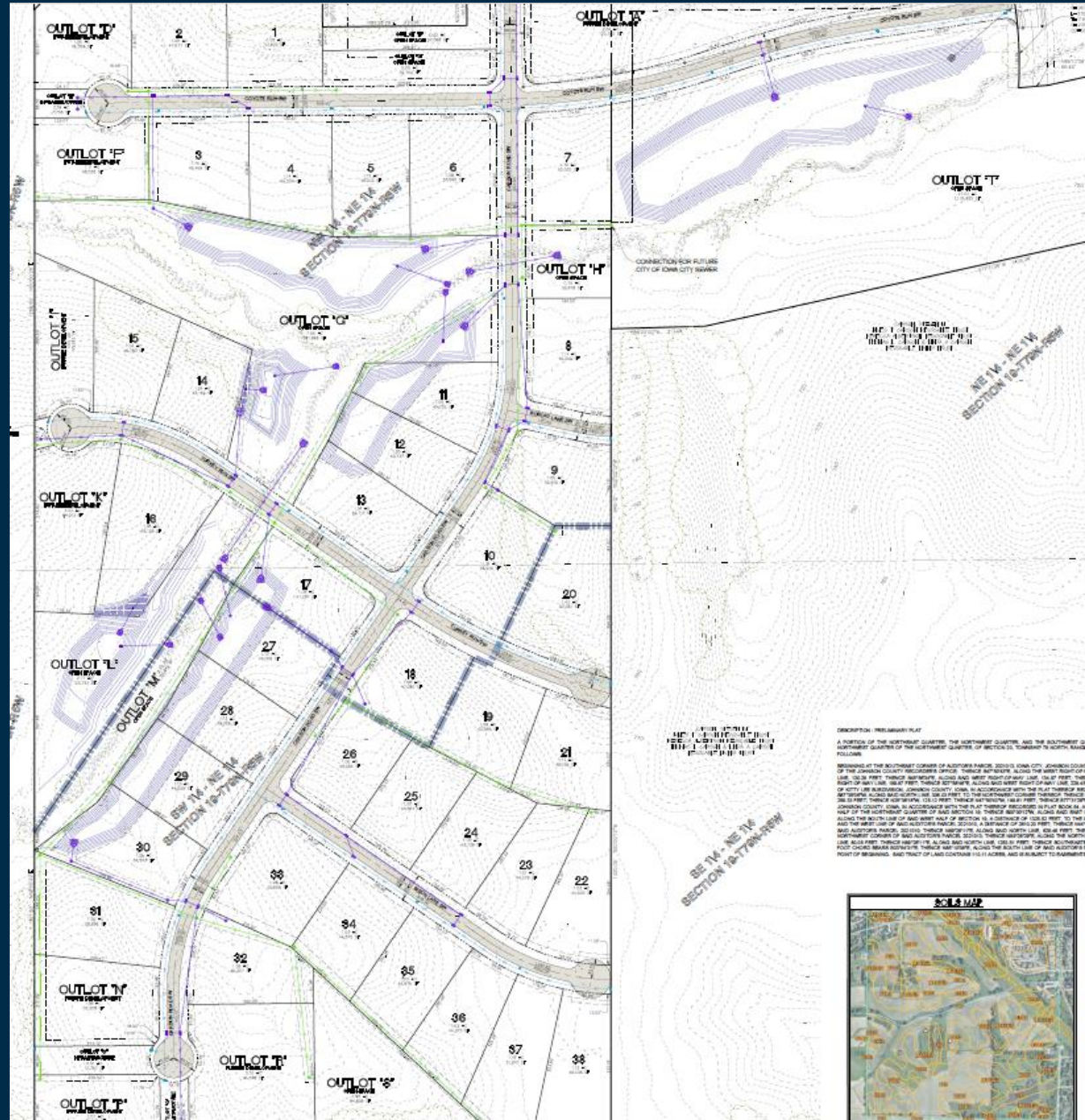
Carson Subdivision

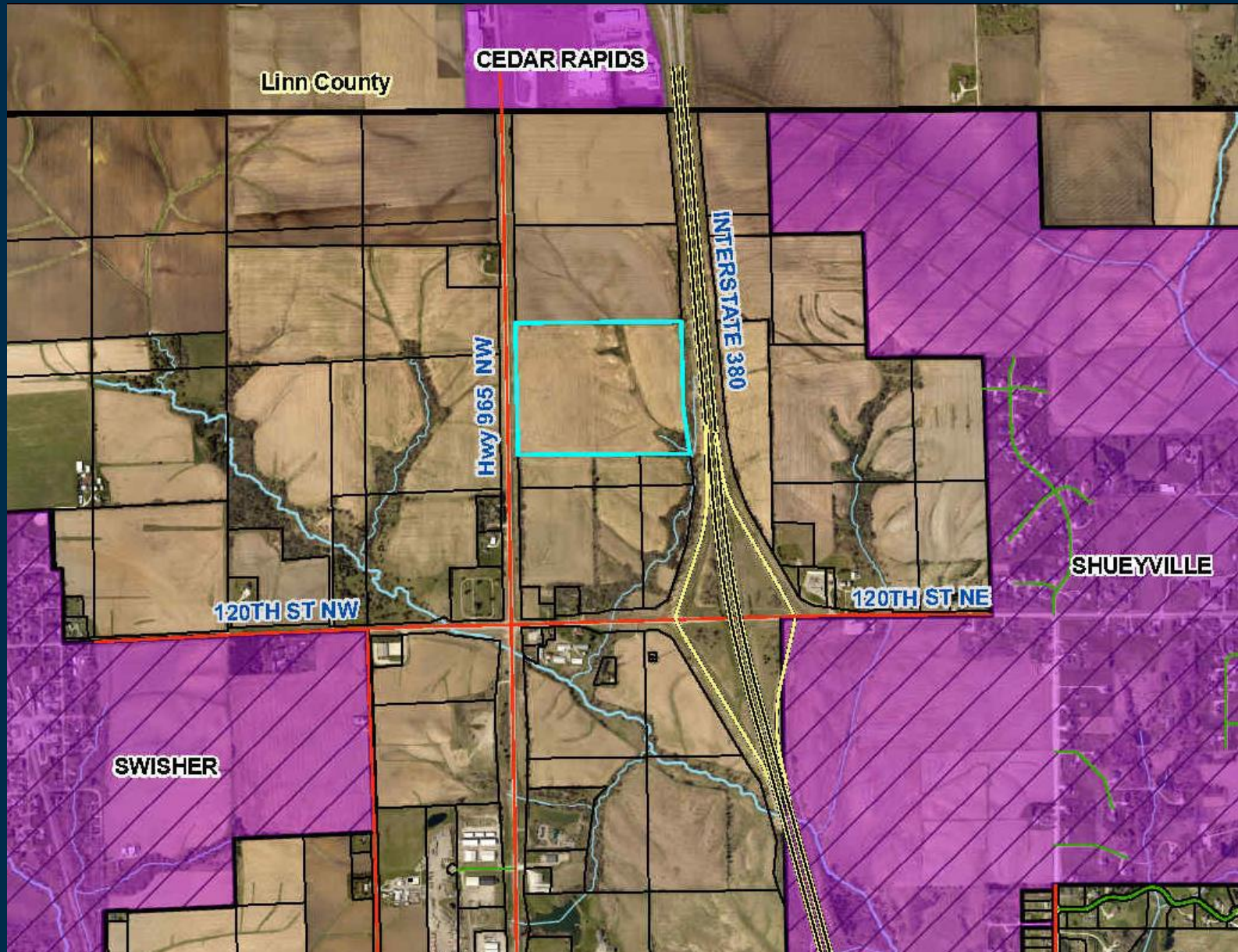




Carson Subdivision

- 38 buildable lots on a total of 110.11 acres
- Pending Board approval of prelim plat
- Lots range in size from 1.00 acre to 1.58 acres
- Average lot size: 1.19 acres

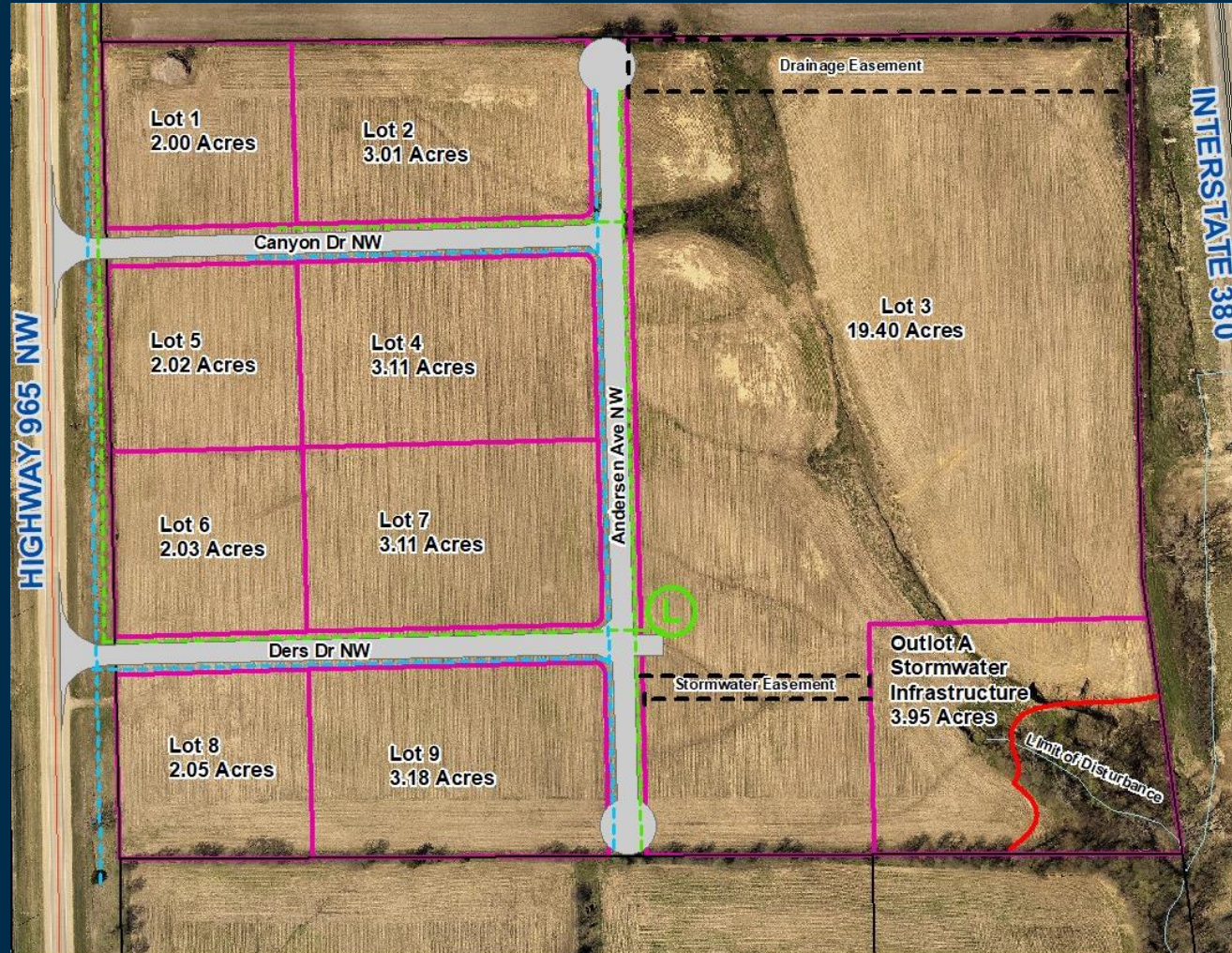




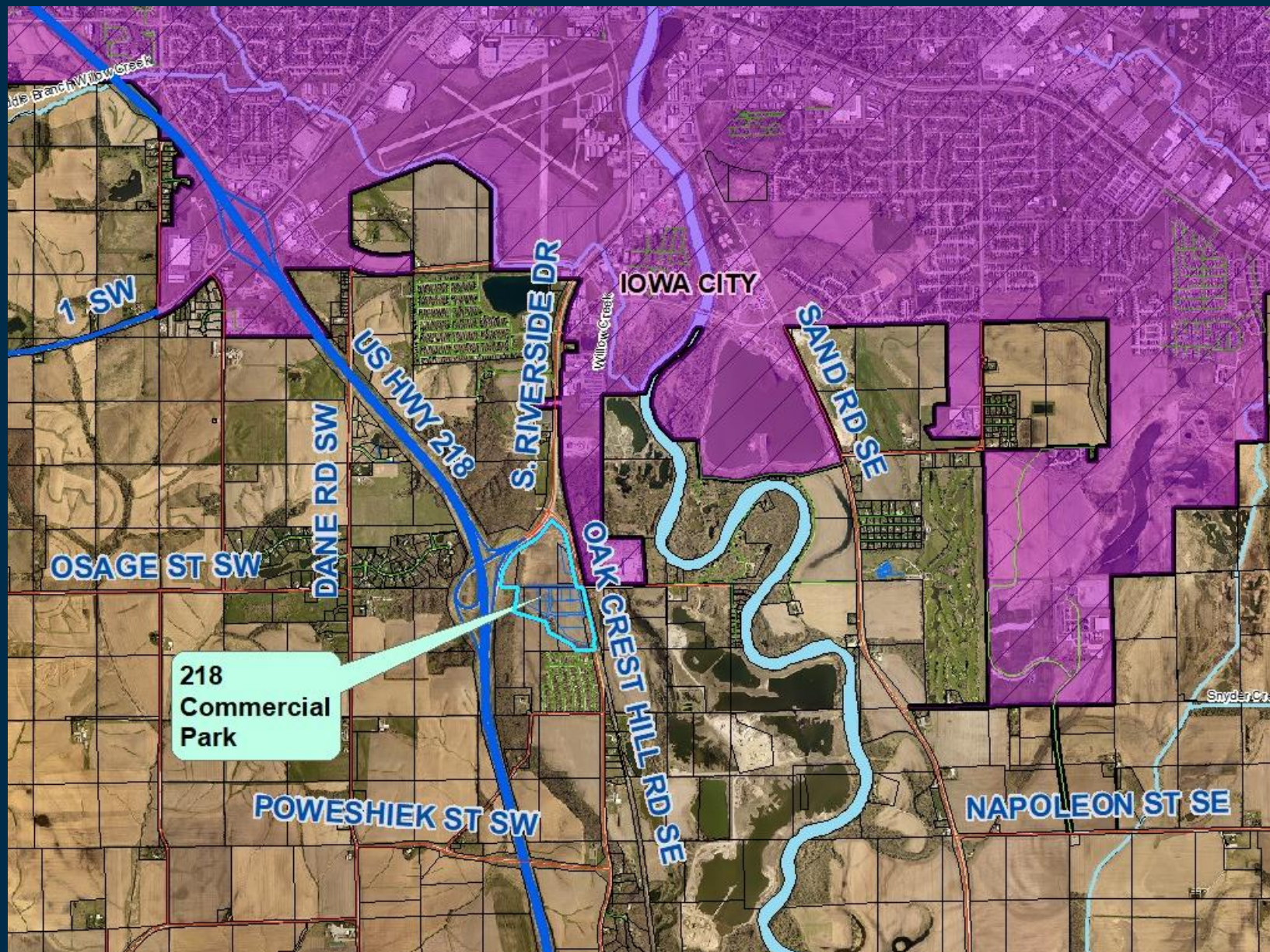


JoCo 50

- 9 buildable commercial lots on a total of 48.87 acres
- Pending Board approval of prelim plat
- Lots range in size from 2.00 acre to 19.40 acres



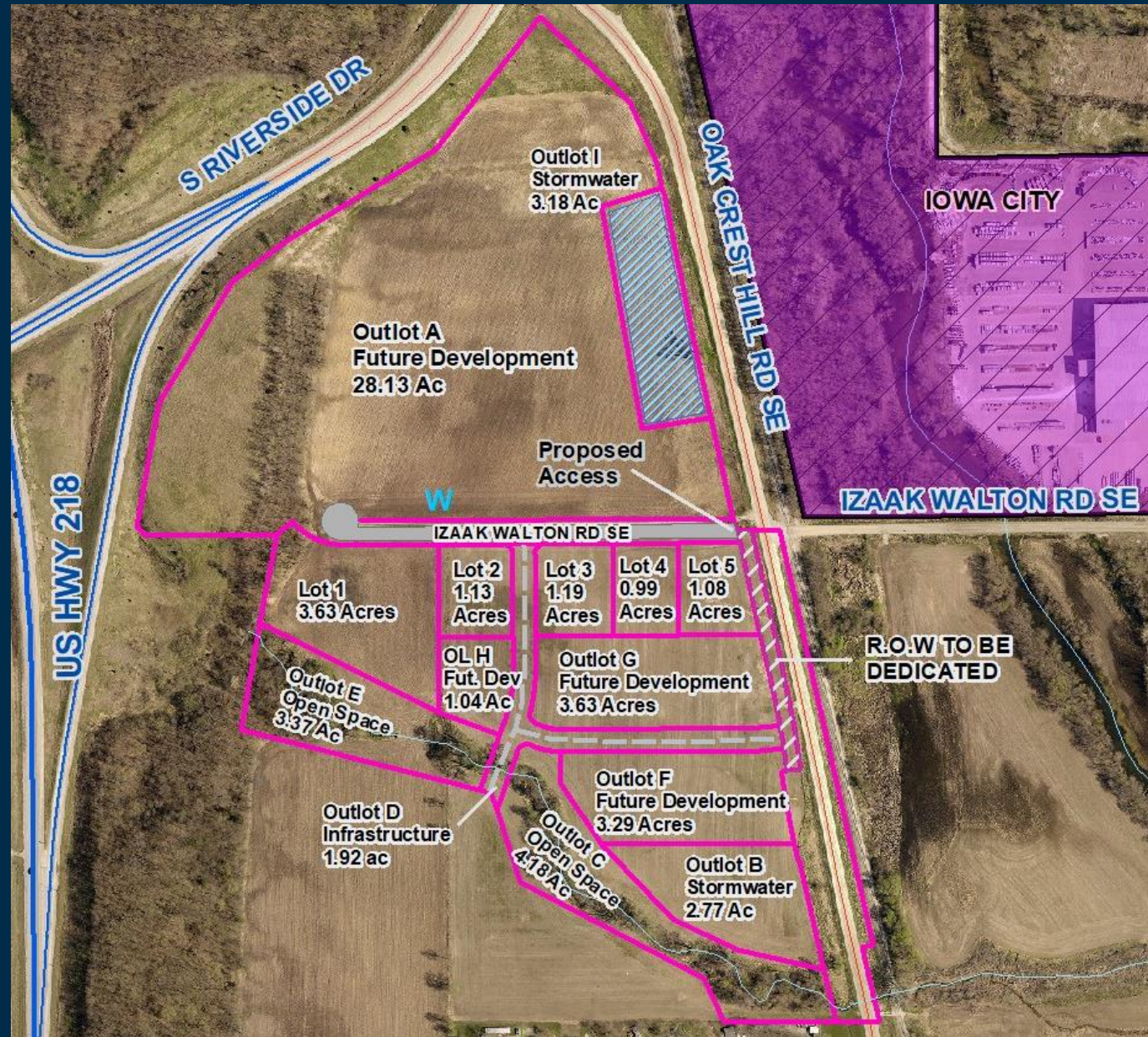
218 Commercial Park Development



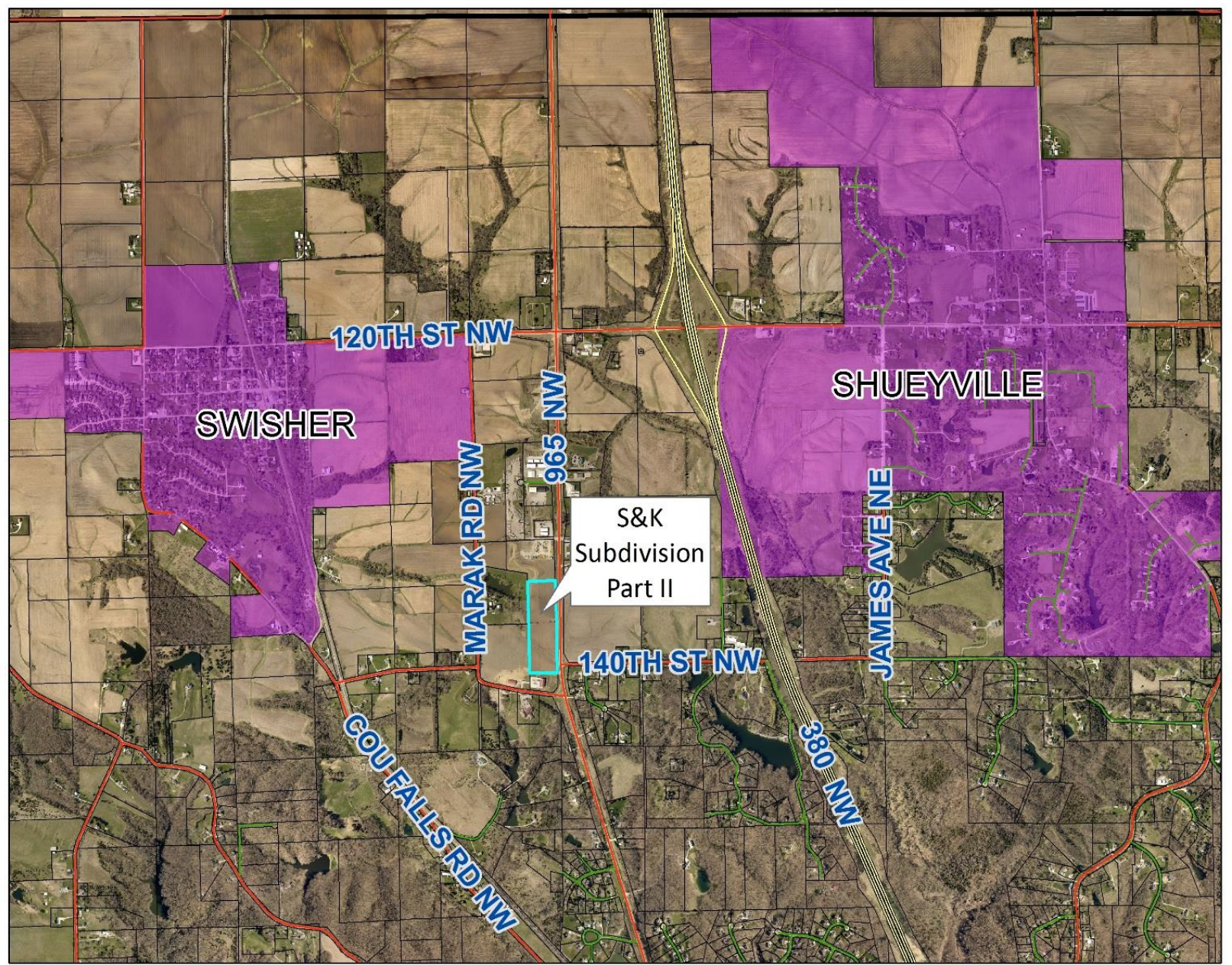


218 Commercial Park Development

- 5 buildable commercial lots and outlots for future development on a total of 65.15 acres
- Several commercial lots can be platted on outlots in the future
- Board approved of prelim plat March 2020



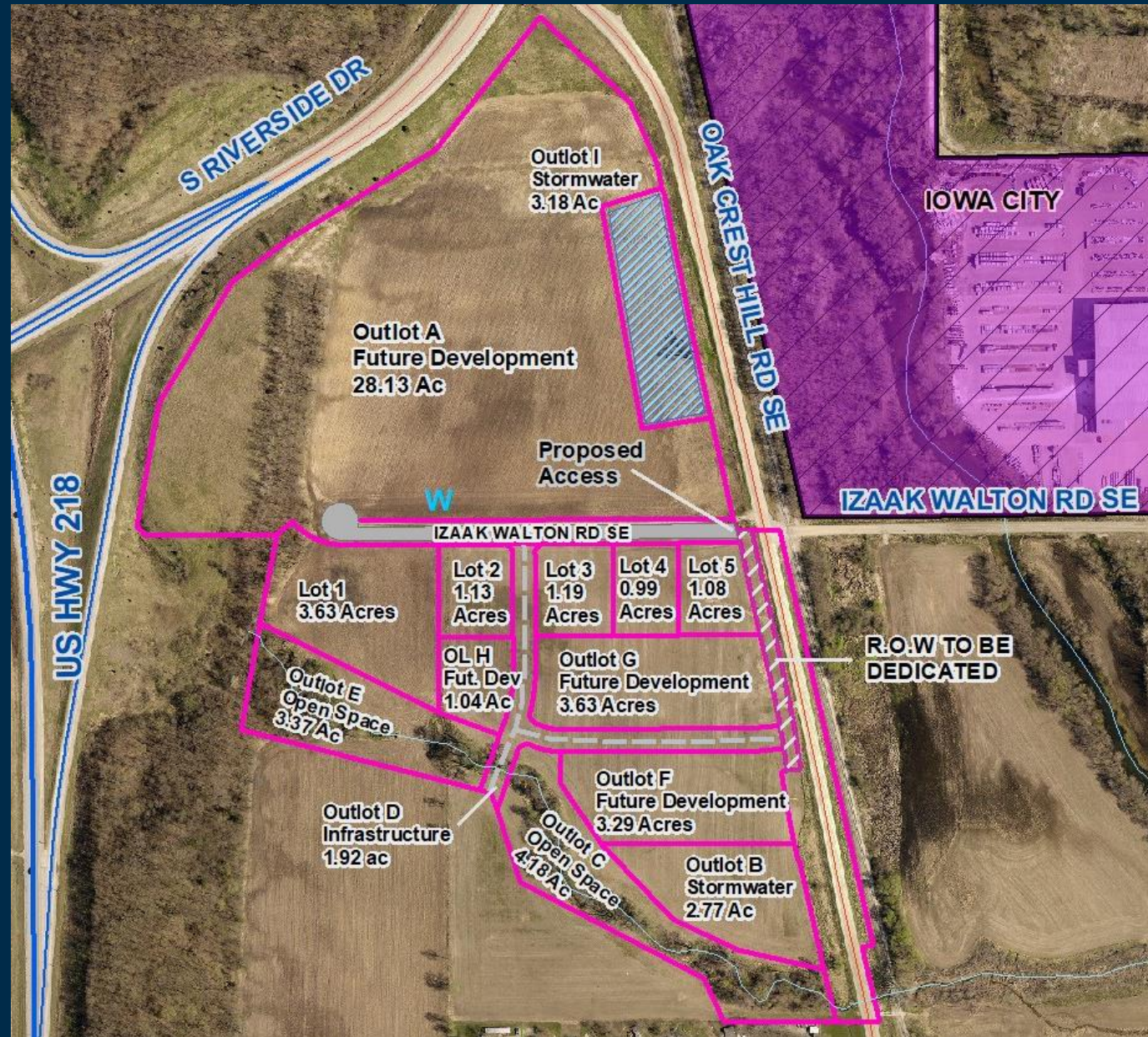
S & K Commercial Subdivision





S & K Commercial Subdivision

- 3 buildable commercial lots on 17.37 acres
- Final Plat approved by Board in March 2020
- Commercial condo type development currently being developed





Questions?

We also have a variety of other smaller subdivisions creating several residential lots